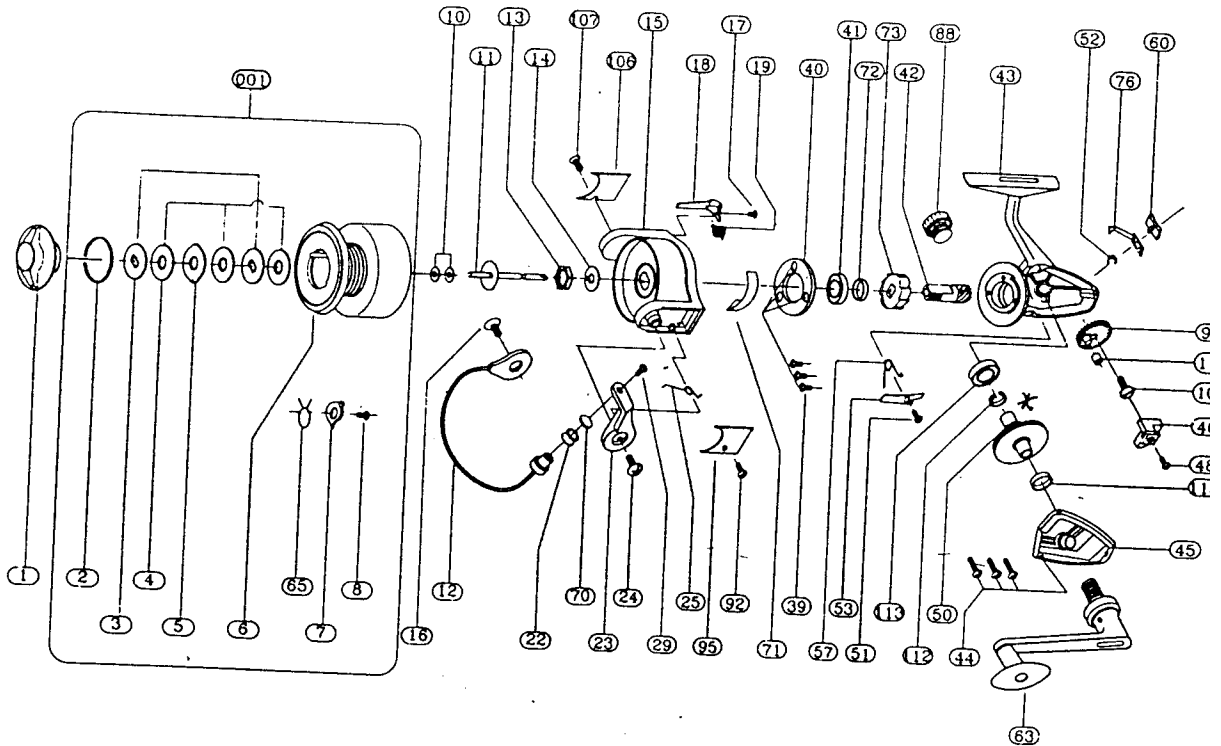


Shakespeare<sup>®</sup>

2200-070

SIGNATURE  
2200-070 (NE)  
w/ Gold Spool



REF #	PART NUMBER	DESCRIPTION	REF #	PART NUMBER	DESCRIPTION
001	79-66-0254-01	SPOOL ASSEMBLY	1	79-40-0207-01	DRAG NUT
2	79-54-0129-01	RETAINER RING	3	79-72-0661-01	METAL WASHER
4	79-72-0662-01	FIBER WASHER	5	79-72-0663-01	EARED WASHER
7	79-43-0127-01	CLICK PAWL	8	79-58-0641-01	CLICK PAWL SCREW
10	79-72-0666-01	REAR WASHER	11	79-60-0154-01	MAIN SHAFT
12	79-03-0126-01	BAIL WIRE	13	79-40-0210-01	PICKUP NUT
14	79-72-0669-01	PICKUP WASHER	15	79-34-0151-01	PICKUP HOUSING
16	79-58-0643-01	BAIL SCREW	17	79-58-0646-01	TRIP LEVER SCREW
18	79-37-0203-01	TRIP LEVER	19	79-67-0682-01	TRIP LEVER SPRING
22	79-57-0053-01	LINE ROLLER	23	79-07-0090-01	BAIL BRACKET
24	79-58-0649-01	BRACKET SCREW	25	79-67-0663-01	BAIL SPRING
29	79-58-0652-01	ROLLER SCREW	39	79-58-0653-01	BEARING RETAINER SCREW
40	79-53-0067-01	BEARING RETAINER	41	79-04-0082-01	BALL BEARING
42	79-46-0106-01	PINION	43	79-27-0179-01	FRAME
44	79-58-0657-01	COVER PLATE SCREW	45	79-47-0415-01	COVER PLATE
46	79-75-0071-01	LEVEL WIND YOKE	48	79-58-0658-01	YOKE SCREW
50	79-28-0187-01	DRIVE GEAR	51	79-58-0661-01	NON-REV PAWL SCREW
52	79-15-0056-01	E-CLIP	53	79-43-0131-01	NON-REV PAWL
57	79-67-0668-01	NON R/PAWL SPRING	60	79-10-0087-01	N-R BUTTON
63	79-20-0158-01	CRANK ASSEMBLY	65	79-67-0669-01	CLICK SPRING
70	79-21-0043-01	ROLLER CUP	71	79-00-0035-01	BAIL STOP
72	79-63-0032-01	SLEEVE	73	79-50-0066-01	RATCHET
76	79-02-0037-01	THROWOUT ARM	88	79-12-0062-01	CRANK CAP
92	79-58-0666-01	BAIL SPRING P/SCREW	95	79-47-0421-01	BAIL SPRING PLATE
98	79-28-0199-01	OSCILLATION GEAR	100	79-58-0669-01	GEAR SCREW
106	79-47-0426-01	TRIP LEVER PLATE	107	79-58-0666-01	TRIP LEVER P/SCREW
112	79-11-0063-01	CAM	113	7904008701	BALL BEARING
4	7909004501	WEAR BUSHING	115	79-09004601	BRASS BUSHING

REVISED 6-11-96 REF# 95 AND 107

REVISED 1-9-97 REF# 113 SUB 79-04-0081-01

\* o/s PINION GEAR